

10ZR



94 kNm



7,7 bis
9,4 m



3,2 bis
3,6 m



3,7 m



2.160 kg



420°



25,8 kNm



255 bar



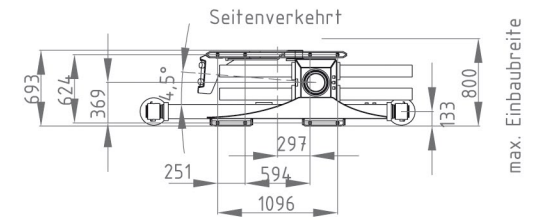
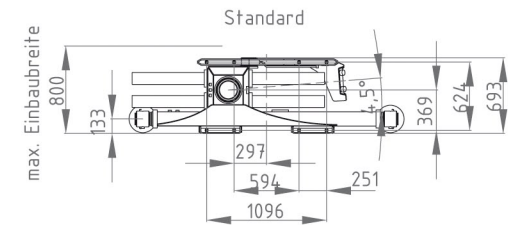
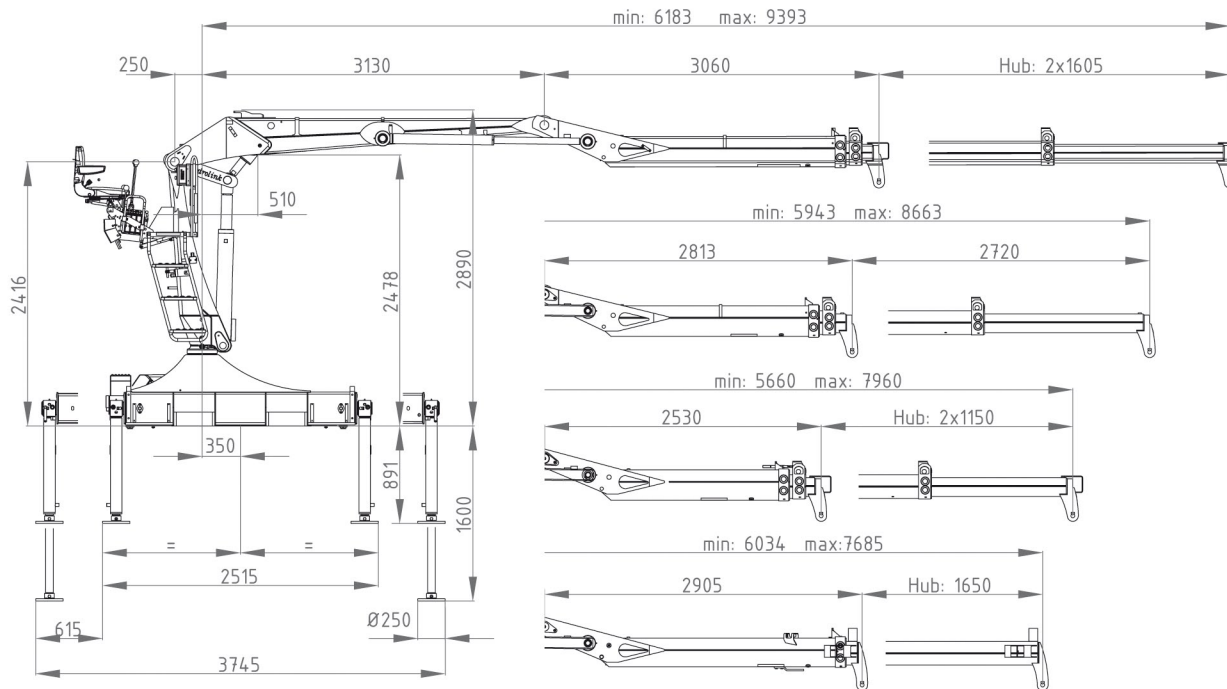
1x
80 bis
100 l/min
ca. 46 kW



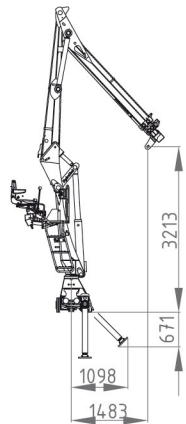
2x
65 l/min
ca. 60 kW



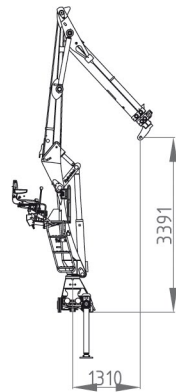
LS
150 l/min
ca. 70 kW



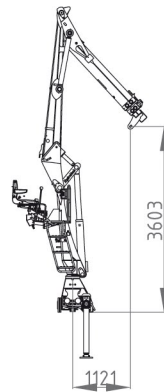
9,4m
Schläuche innen



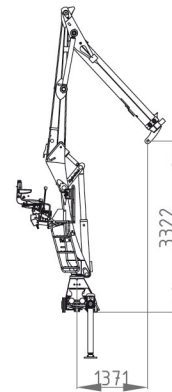
8,65m
Schläuche innen



8,0m
Schläuche innen



7,7m
Schläuche außen/innen



	3m	4m	5m	6m	7m	8m	9m	
7,7m	3120	2330	1860	1540	1300	-	-	kg
8,0m	3050	2300	1830	1510	1285	-	-	kg
8,65m	3030	2280	1810	1490	1265	1090	-	kg
9,4m	3000	2250	1780	1460	1235	1060	922	kg

